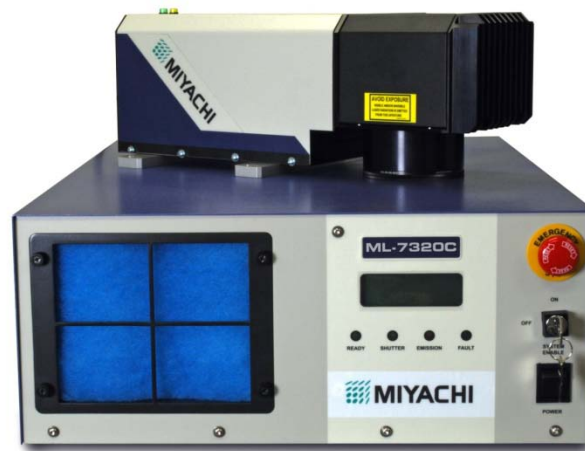


ML-73 series Fiber Laser Marking at its best

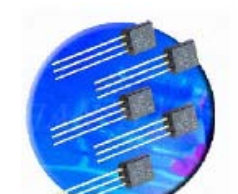
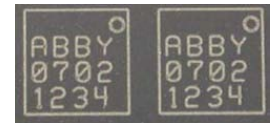


 **MIYACHI**
MIYACHI EUROPE CORPORATION

WWW.MIYACHIEUROPE.COM



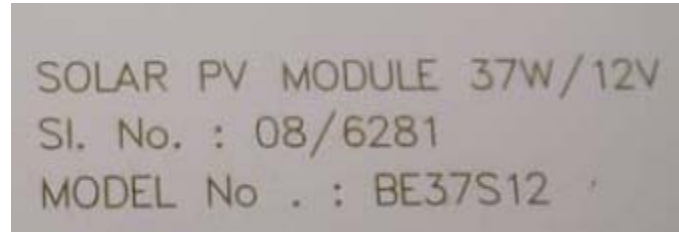
Applications Laser Marking



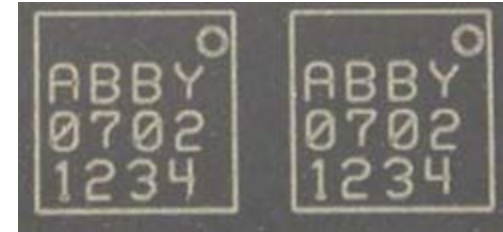
Various Plastics – Unterschiedliche Kunststoffe



PPS



Vinyl label through glass
Vinyl-Etikett durch Glas



Epoxy housing
Epoxid-Gehäuse



Auto electrical casing
Kunststoffgehäuse



Day & Night Marking – Tag & Nacht Design

- Industry Criteria:
 - - Removal of paint without darkening underlying plastic
- Beurteilungskriterien
 - Abtrag einer Lackschicht, ohne das Grundmaterial zu verdunkeln



Medical - Medizintechnik



Depth marks
– various

Unterschiedliche
Tiefengravuren



Endoscope &
Arthroscopic
tools

Endoskope &
Arthroskopische
Werkzeuge



Medical tools

Medizinische
Werkzeuge



Medical
covers

Gehäuse für
Medizingeräte



Implants

Implantate



Tube
cutting
Schneiden
von Rohren



Bone
screws
Knochen-
schrauben



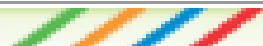
Implantable
casings
Gehäuse von
Implantaten



General tools
Pinzetten



Plastic
components
Kunststoff-
Komponenten



Solar Industry – Solar Industrie



Marking aluminum frames
for crystalline cells

Beschriften des
Aluminium-Rahmens von
kristallinen Solarzellen



Solar & semi conductor
(hard & soft)

Solar & Halbleiter (hard & soft)

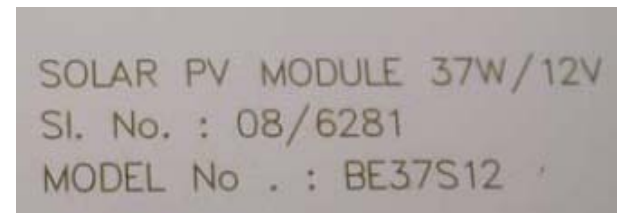


Marking on the fly application.

Thin film solar cells thin steel backing

Marking on the fly Anwendung

6 Stahlrückseite (dünnes Blech) einer
Dünnschicht-Solarzelle



Marking labels through glass of crystalline
cells for as tested power ratings

Markierung von Etiketten durch das Glas,
von leistungs-getesteten Solarzellen



ML 73 Series at a glance



Benefits ML-7311C (10W), ML-7320C (20W), ML-7340C (35W)

- Unique Application Parameter Range
- High speed scan head
- Full featured and user friendly software
- Low cost of ownership
- I/O based mark file selection (255)
- Tailored operation – PC, touch screen, pendant, standalone
- Guide beam in front of main safety shutter
- Integrated XYZR motion, mark on the fly operation
- Markers can be remotely programmed through LAN/RS232
- Multi language + language editor for additions
- Marking on the fly



Areas of Expertise

Miyachi Europe Corporation delivers reliable and sustainable business solutions to its partners in **Automotive, IT & Multimedia, Solar-Electronics-Batteries, Medical, Aerospace and Defence.**



Automotive Miyachi, Peco, Unitek and Eapro products have a very long tradition in welding, marking and bonding electronic components. For over 100 years now, our products enable the automotive industry to produce and research solid connections and distinct markings which perfectly match the specific needs in the automotive industry. Let us "drive" our business together!



IT & Multimedia Reliability, safety and flexibility are a selection of some key evaluation criteria chosen by our valuable IT & Multimedia customers. Our products deliver solid connections and distinct markings which perfectly match the specific needs in the information technology and multimedia industries in the production process of mobile phones and computers for example.



Electronics & Solar Cells Our products enable the electronics, the battery and the solar cell industries to produce and to research solid connections and distinct markings which perfectly match the specific needs in the electronics, solar cells and batteries industries to produce connectors, switches, cables, LI-Ion batteries, PC boards, lighting components and solar cells.



Medical Safety, reliability and innovation are a selection of some key evaluation criteria chosen by our valuable medical device customers. Our laser welding, laser marking, resistance welding, reflow soldering, acf laminating, heat sealing and heat staking technologies are used in various high-end medical devices such as hearing aids, catheters, pacemakers, needle assemblies, lenses and cutting tools.



Aerospace Reliability, safety and durability are a selection of some key evaluation criteria chosen by our valuable aerospace customers. Miyachi, Peco, Eapro and Unitek products deliver solid connections and distinct markings which perfectly match the specific needs in the aerospace industry. Many applications have been realised including LCD displays, PC Boards, turbo jets, lighting devices, coils and motor shieldings.



Defence Miyachi Europe is a reliable and customer oriented business partner who honors confidentiality. Miyachi Europe has acquired a wealth of experience over the years and works closely with partners in the defence industry who are looking for reliable and robust solutions. Our laser welding, laser marking, resistance welding reflow soldering, ACF laminating, heat sealing and heat staking technologies are used in radars and in LCD screens, connectors, batteries, detectors and engines.



Miyachi Europe Business Services



Application Support

Our Technology Centers offer technical application development and troubleshooting support in our key technologies Laser Welding, Laser Marking, Resistance Welding, Hot bar Reflow Soldering, Hot bar ACF Laminating, Heat Seal Bonding, Heat Staking and Fluid Dispensing and Systems.



Sample Handling

Our Technology Centers offer you an application feasibility testing service in the above mentioned technology fields. Please send samples to our labs for an evaluation to determine the suitability of one of our technologies. Miyachi Europe offers feasibility testing, application consulting and in-house sampling services.



Training

At Miyachi Europe we provide equipment and process training for the above mentioned technology areas. Training duration can be adjusted to your needs and can take place either at our Application Lab or at your facilities on-site.



Technical Support

Miyachi Europe provides premium in-house technical service for all Miyachi, Peco, Eapro and Unitek products and systems. The dedicated and knowledgeable technical service team is pleased to install, to train, to maintain and to fix products and systems sold under our brands. Technical Support is given for software and hardware ordered whether it is covered under warranty or as a billable service for spare parts and labor.

Complex production processes, highest quality expectations and JIT supply chain requirements make technical service for installation, training, maintenance and repair a very important source to ensure maximum uptime.



ISO Certification

Miyachi Europe's facilities are ISO 9001 resp KEMA certified. Download the certificates at www.miyachieurope.com.



Contact us today...

Contacts

- **Miyachi Europe GmbH**
Lindberghstrasse 1
D-82178 Puchheim
Germany
T: +49 (0)89 83 94 030
F: +49 (0)89 83 94 0310
E: info@mec.miyachi.com
- **Miyachi Europe B.V.**
Schootense Dreef 21
5708 HZ Helmond
The Netherlands
T: +31 (0)492 542 225
F: +31 (0)492 536 222
E: webinfo@mec.miyachi.com
- **Miyachi Europe**
95D rue Péreire
Saint Germain en Laye, 78100
France
T: +33 139 046 430
F: +33 130 617 547
E: infofr@mec.miyachi.com
- **Miyachi Europe UK**
16 Royal Scot Road
Pride Park DE24 8AJ Derby
United Kingdom
T: +44 (0)1332 361 238
F: +44 (0)1332 206 215
E: infouk@mec.miyachi.com
- **Miyachi Europe Kft.**
Szent László tér 20
H-1102 Budapest
Hungary
Tel.: +36 (1) 431 9927
Fax: +36 (1) 260 9175
E: infohu@mec.miyachi.com
- **Miyachi Europe GmbH**
Strada della Gebroesa, 86
10156 Torino
Italy
T: +39 (011)223 83 16
F: +39 (011)274 94 66
E: infoit@mec.miyachi.com
- **Miyachi Europe**
Tyrsova 2084
252 28 Cernosice/Prague-West
Czech Republic
T: +420 251 512 157
F: +420 251 512 158
E: infocz@mec.miyachi.com

Technologies

Miyachi is the market leader in developing, building and servicing machines and components for laser welding, laser marking, resistance welding, hot bar and systems.

Miyachi solutions are an integral part of the production process to connect, to join, to automate, to identify or to customise components in a very reliable and very sustainable fashion. Miyachi products are in use in a variety of modern high-tech application fields.

These application fields are our areas of expertise to the benefit of our customers' and our vendors' future growth in Automotive, IT & Multimedia, Electronics & Solar Cells, Medical, Aerospace and Defence.



...or visit us online @

WWW.MIYACHIEUROPE.COM

